

1C-PUR Glue Application System ECOPUR KB



Field of Use

The ECOPUR KB Glue Application System applies glue to one side of dovetail joints without contact and monitors application by means of a camera

The ECOPUR KB system has the following advantages over conventional glue applicators with counter profile:

Savings on glue and cleaning costs through glue application, which can be dosed and controlled precisely

High integrity through camera monitored glue application pattern

One-sided glue application outside the milling station

Simple change of dimension through near conversion-free changeover (production to list ...)

Minimised maintenance and cleaning requirement

Technical Features

The applicator head with separately controlled valves is guided on a linear sled unit past the positioned finger joint profile

Frequency controlled dosing pump for precise glue dosing

Precision dosing through parameter settings (wood thickness, application rate, finger profile)

Monitoring devices:

Monitoring camera with PC for evaluation and checking the application pattern

Glue application monitoring

Glue supply monitoring in the monitoring tank

Compressed air monitoring

Frequency inverter / fuse monitoring

Low maintenance material valves on the applicator head

Intermediate buffer for container monitoring and change

Switch cabinet with Siemens S7 PLC system

Operating panel OP 7 in a separate terminal box, with all operating controls, to install in a suitable location

Can be networked with other control systems and host computers via bus systems

4-line text display for all operating situations and error messages and for entering all digital parameters

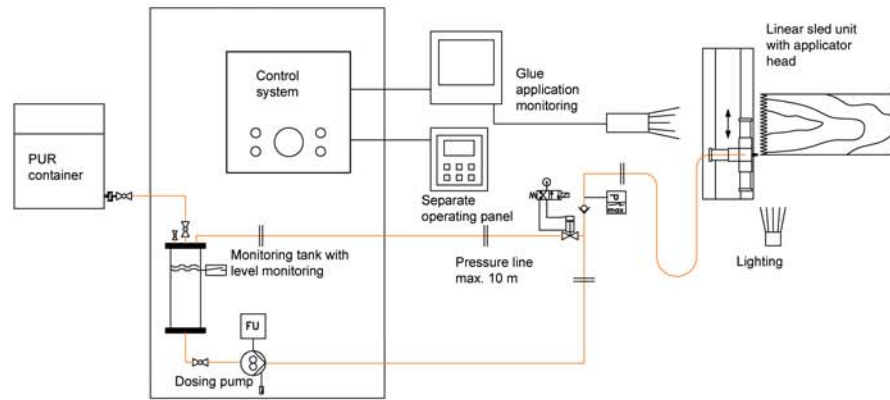
Help text for operator guidance

Suitable container or barrel connection with silica gel filter

Functional Description

The dosing pump supplies a travelling applicator head. The applicator head travels past the dovetails and applies threads of glue to the peaks of these, at right angles to the profile. The number of applicator valves opened is dependent upon the thickness of the wood. The application pattern is acquired by the monitoring camera and evaluated. Additional monitoring systems are incorporated into the system

Recognised by the FMPA in connection with approval of a glue



Function scheme

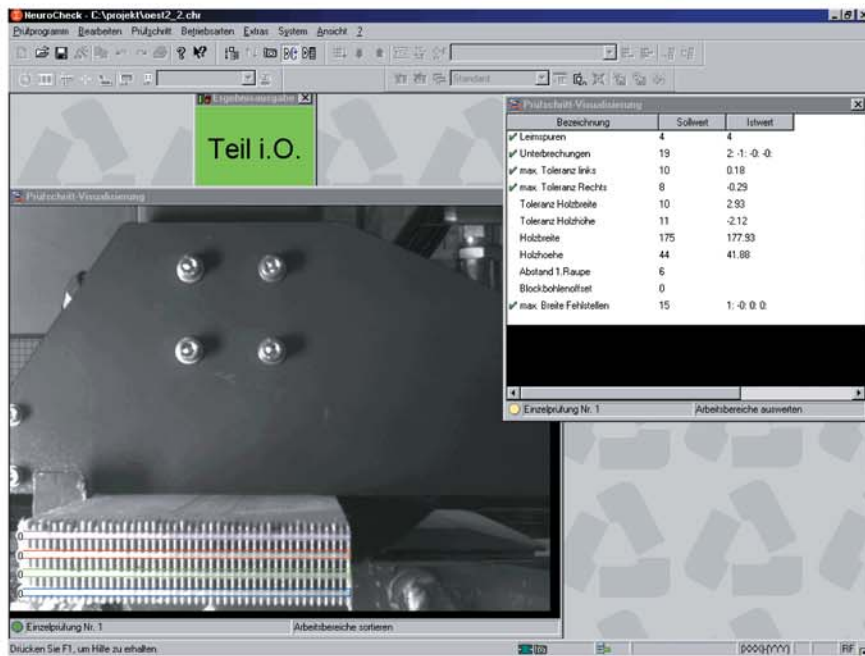
Accessories

Automatic height adjustment of the applicator head for changes of dimension, i.e. automatic zero edge distance adjustment for the first glue thread

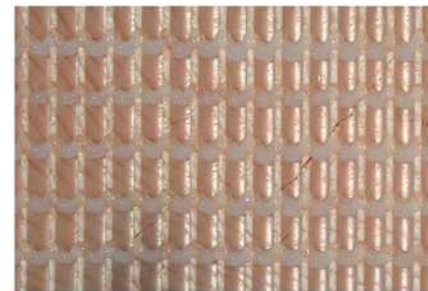
Material supply system for flexible positioning of the raw glue container

Integrated modem for remote maintenance of the camera monitoring and the Siemens S7 PLC system.

Customised solutions



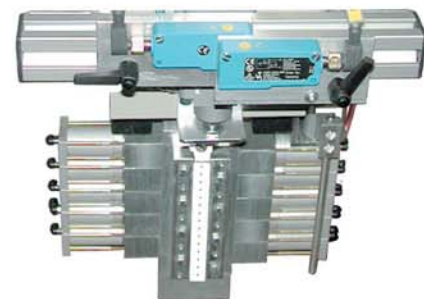
Monitoring camera display



Glued workpiece

Technical Data

Glue	1C-PUR glue without abrasive filler max. viscosity 10,000 mPa s
Distance between glue threads	10 mm
Glue application	150 - 220 g/m ² per joint
Throughput rate	up to 12 kg/min depending upon the layout
Power supply voltage	400 V AC / 50 Hz; 3 kW



Applicator head



PROTECH
INTERNATIONAL

We are your service!

Phone: 704-321-5500 Fax: 704-321-5507

<http://www.protech-international.com>

5521 Cannon Drive
Suite 102

Monroe, NC 28110

Phone: (704) 296-9600

Fax: (704) 296-9601

